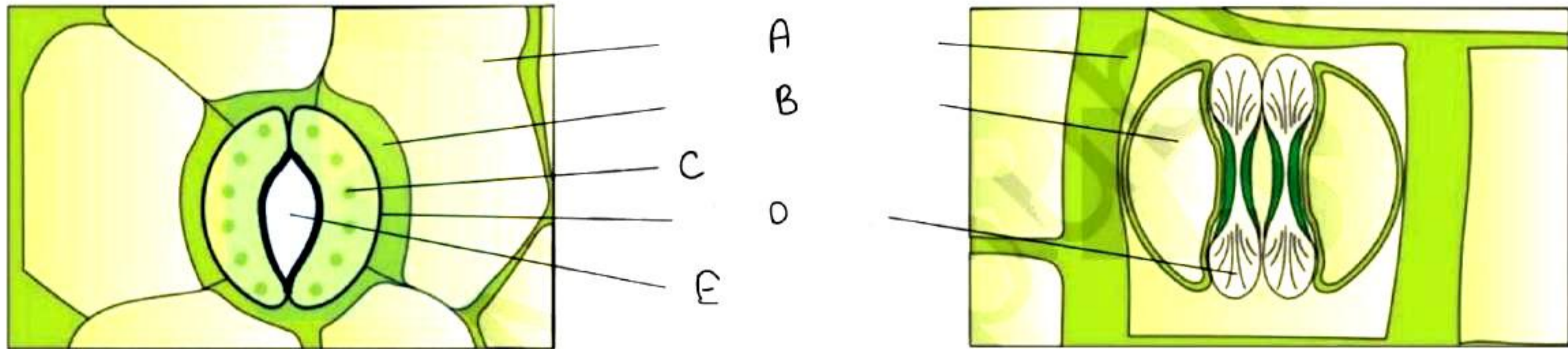


Anatomy of Flowering Plants

Set – 1



Q1. Label the diagram as A, B, C, D, E respectively.

- A. Subsidiary Cells, Epidermal Cells, Chloroplast, Guard Cells, Stomatal Pore
- B. Epidermal Cells, Subsidiary Cells, Chloroplast, Guard Cells, Stomatal Pore
- C. Subsidiary Cells, Epidermal Cells, Chloroplast, Stomatal Pore, Guard Cells
- D. Epidermal Cells, Subsidiary Cells, Guard Cells, Chloroplast, Stomata

Ans. (B)

Q2. Recognise the correct name of the given figure.

- A. Stomata with dumbbell shaped guard cell
- B. Stomata with bean shaped guard cells
- C. Stomata with been dumbbell shaped guard cell
- D. None of the above

Ans. (B)

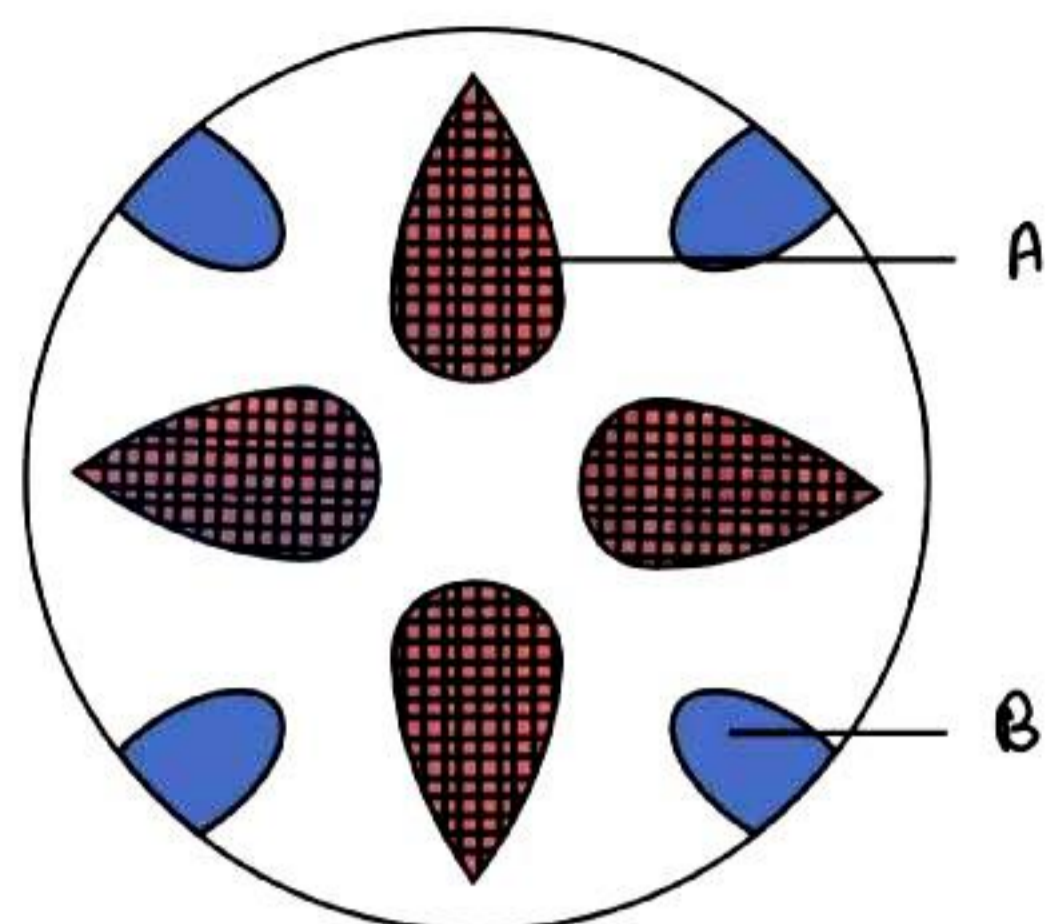
Q3. Recognise the correct name of the given figure.

- A. Stomata with dumbbell shaped guard cell
- B. Stomata with bean shaped guard cells
- C. Stomata with been dumbbell shaped guard cell
- D. None of the above

Ans. (A)



Set - 2



Q1. Label the diagram as A and B respectively.

- A. Xylem and Phloem
- B. Phloem and Xylem
- C. Xylem and Cambium
- D. Cambium and Phloem

Ans. (A)

Q2. Label the diagram as A and B respectively.

- A. Xylem and Phloem
- B. Phloem and Xylem
- C. Xylem and Cambium
- D. Cambium and Phloem

Ans. (B)

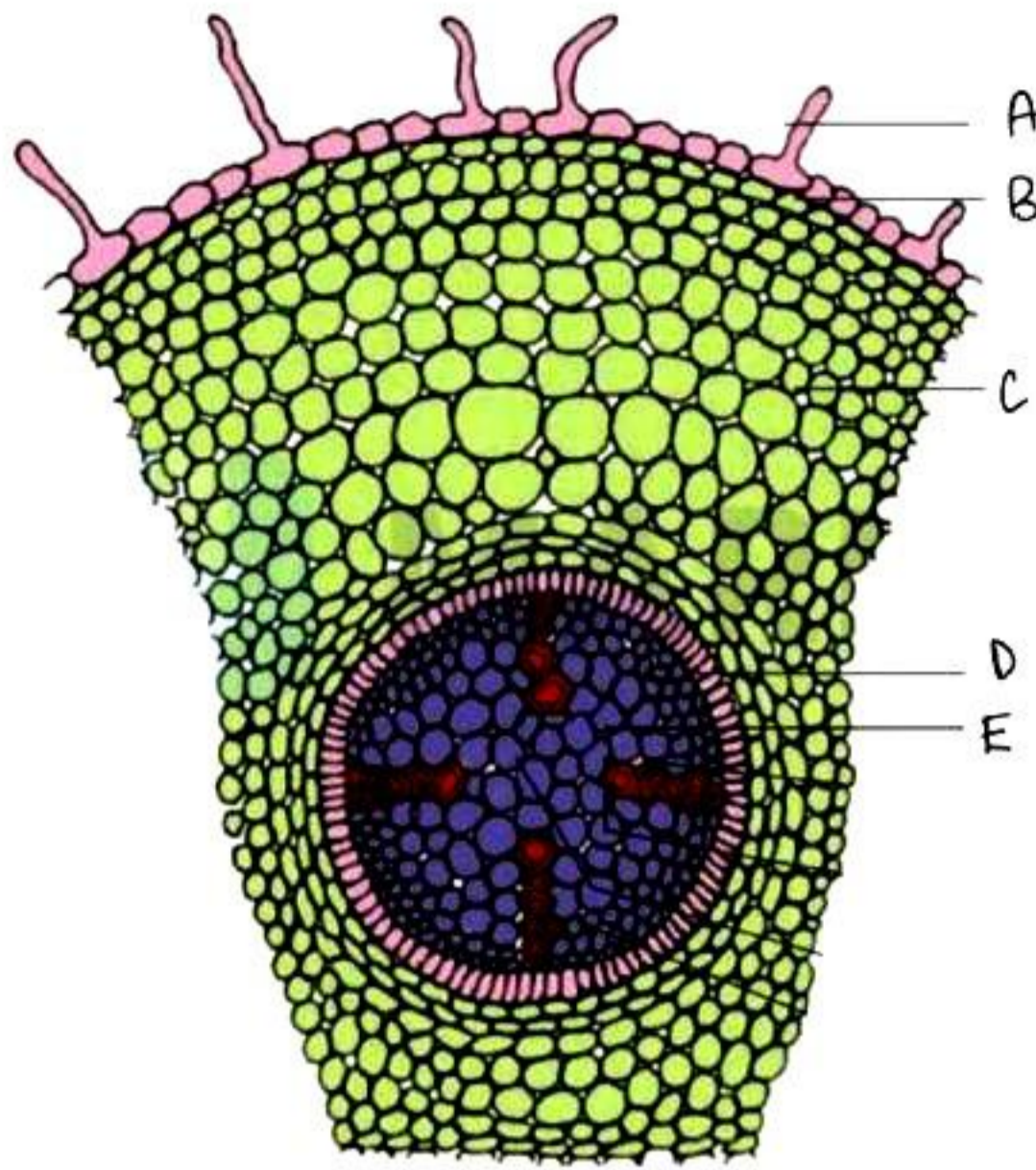
Q3. Label the diagram as A, B, C, respectively.

- A. Phloem, Cambium, Xylem
- B. Xylem, Cambium, Phloem
- C. Cambium, Phloem, Xylem
- D. Cambium, Xylem, Phloem

Ans. (A)



Set – 3



Q1. Label the diagram as A, B, C, D, E respectively.

- A. Trichomes, Epidermis, Cortex, Endodermis, Pericycle
- B. Trichomes, Hypodermis, Cortex, Endodermis, Pericycle
- C. Root hair, Epidermis, Cortex, Endodermis, Pericycle
- D. Root hair, Hypodermis, Cortex, Endodermis, Pericycle

Ans. (C)

Q2. Label the diagram as A, B, C, D respectively.

- A. Protoxylem, Metaxylem, Pith, Xylem
- B. Protoxylem, Metaxylem, Pith, Phloem
- C. Metaxylem, Protoxylem, Pith, Phloem
- D. None of the above

Ans. (B)

Q3. Label the diagram as A, B, C, D, E respectively.

- A. Trichomes, Epidermis, Cortex, Endodermis, Pericycle
- B. Trichomes, Hypodermis, Cortex, Endodermis, Pericycle
- C. Root hair, Epidermis, Cortex, Endodermis, Pericycle
- D. Root hair, Hypodermis, Cortex, Endodermis, Pericycle

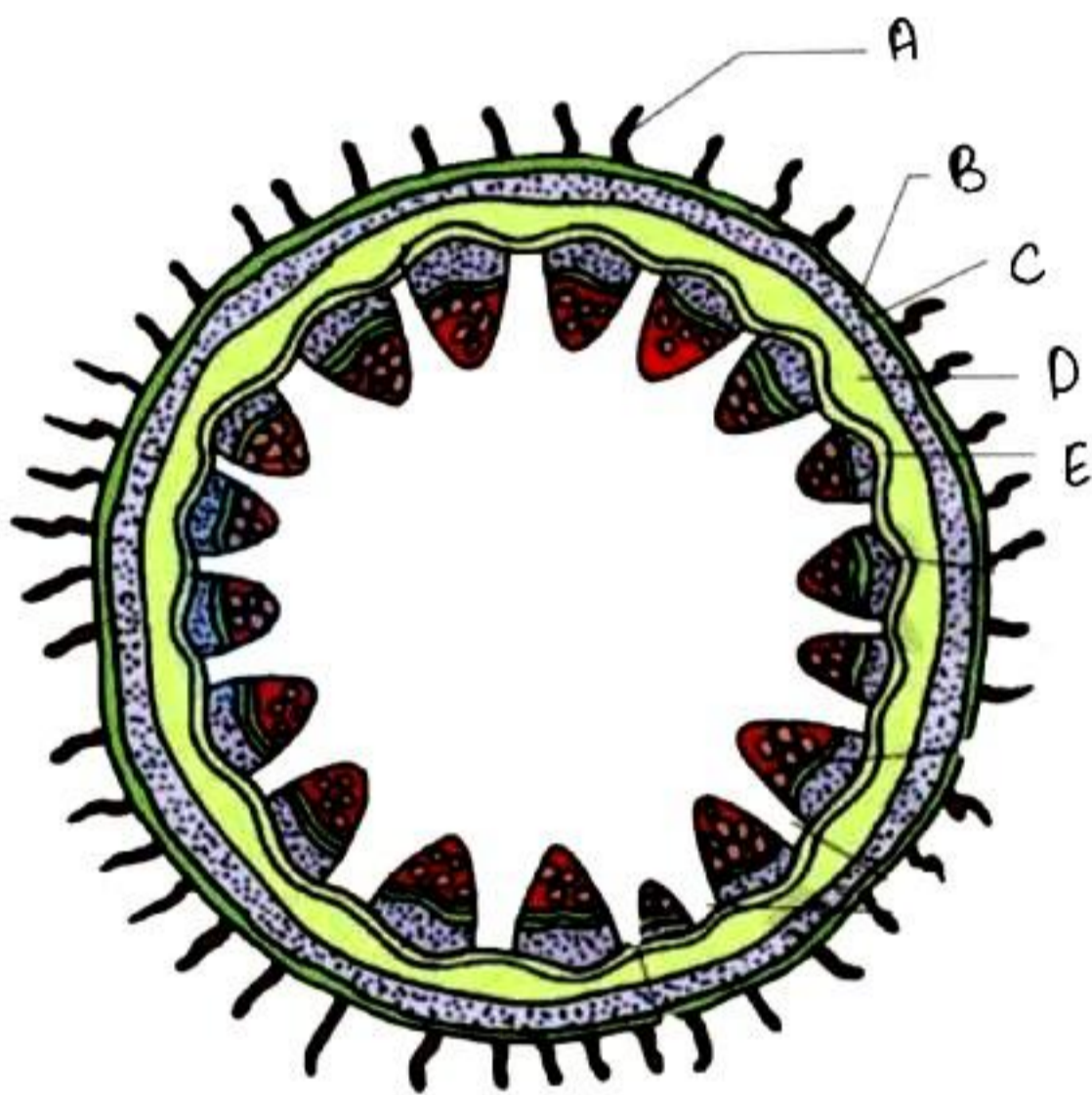
Ans. (C)

Q4. Label the diagram as A, B, C, D respectively.

- A. Protoxylem, Metaxylem, Pith, Xylem
- B. Protoxylem, Metaxylem, Pith, Phloem
- C. Metaxylem, Protoxylem, Pith, Phloem
- D. Phloem, Protoxylem, Pith, Metaxylem

Ans. (D)

Set – 4



Q1. Label the diagram as A, B, C, D, E respectively.

- A. Trichome, Epidermis, Hypodermis, Parenchyma, Pericycle
- B. Trichome, Epidermis, Hypodermis, Parenchyma, Endodermis
- C. Epidermal hair, Epidermis, Hypodermis, Parenchyma, Endodermis
- D. None of the above

Ans. (C)

Q2. Label the diagram as A, B, C, D respectively.

- A. Vascular Bundle, Pith, Pericycle, Medullary rays
- B. Pith, Pericycle, Medullary rays, Vascular Bundle
- C. Pericycle, Vascular bundle, Medullary rays, Pith
- D. Pericycle, Vascular bundle, Medullary rays, Phloem

Ans. (C)

